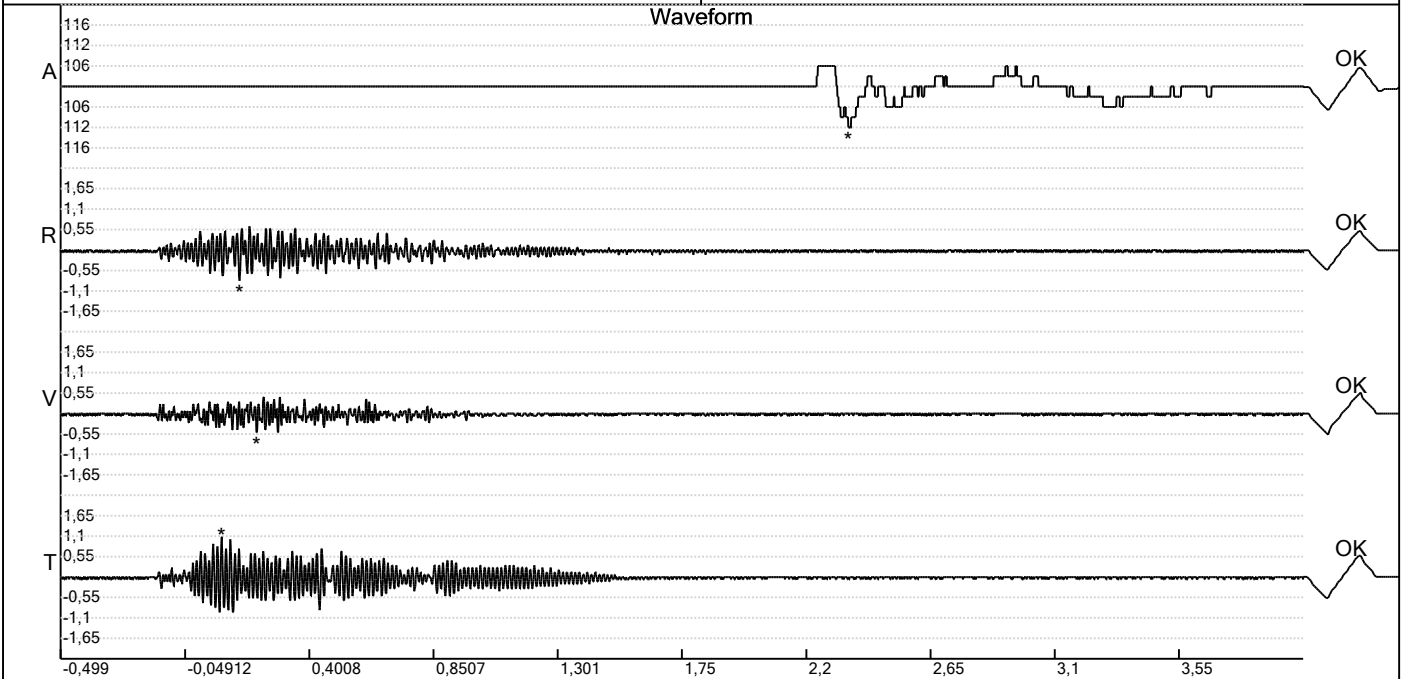


Carrière de BRS
 Comblain -6
 Tir du 13/07/2023
 Sismographe placé au
 261 Halleux
 4710 Comblain-au-Pont

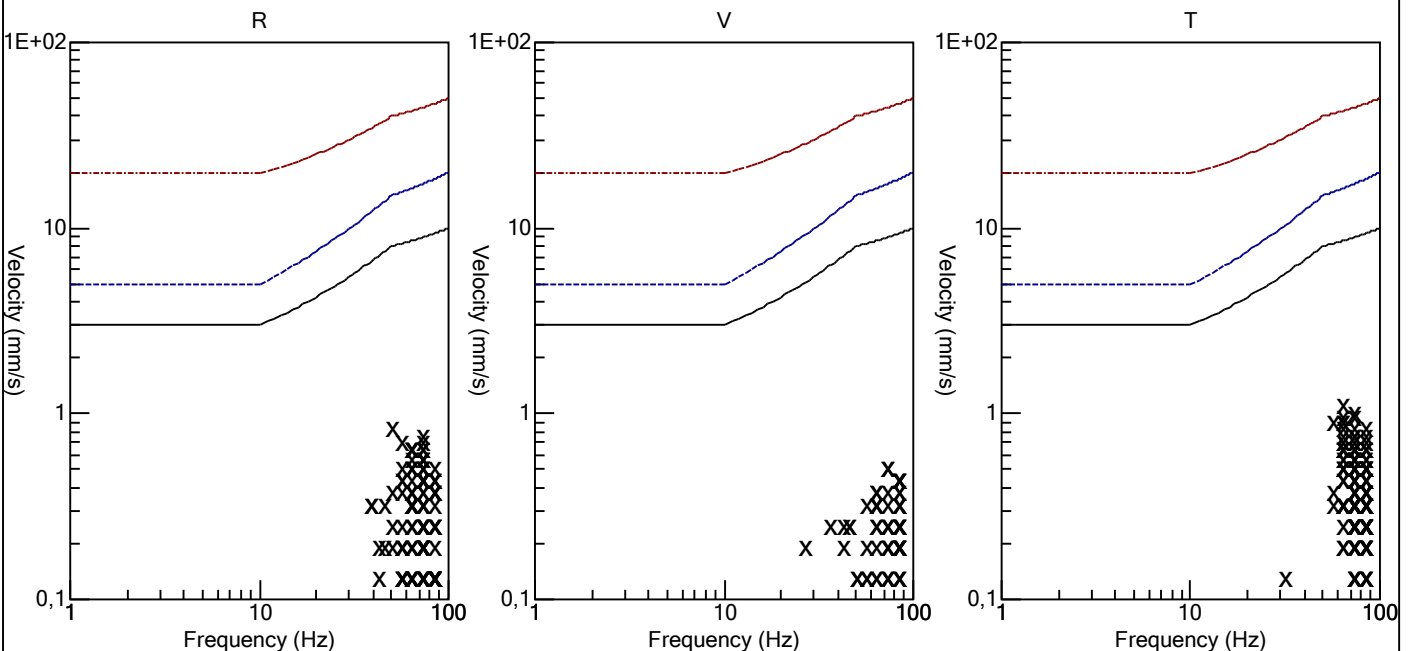
Record: 1789202307131401040.dtb
 Number: 040
 Seismograph: Mini-Seis 1789
 Type of Record: Waveform
 Date: 13-07-23 14:01:00
 Duration: 4,50 Seconds
 Sample Rate: 1024
 Pre-Trigger: 0,5 Seconds
 Seismic Trigger: 0,51 mm/s
 Acoustic Trigger: 142,1 dB
 Seismic Gain: 63,5
 Acoustic Gain: 141,9 dB
 Voltage: 6,5

Peaks and Frequencies
 PPV Maximum (Geo #1): 1,1 mm/s
 Acoustic #1: 112,0 dB @ 5,1 Hz (2,353516 s)
 Radial #1: 0,83 mm/s @ 51,2 Hz (0,1494141 s)
 Vertical #1: 0,51 mm/s @ 73,1 Hz (0,2109375 s)
 Transverse #1: 1,1 mm/s @ 64,0 Hz (0,08398438 s)
 Last Calibration Date: 03-12-21

Graph Information
 Time Range: -0,499 s to 4 s, Intervals: 0,4499 Seconds



Velocity vs. Frequency (DIN 4150-3 Tab 1)



Carrière de BRS
Comblain -6
Tir du 13/07/2023
Sismographe placé au
261 Halleux
4710 Comblain-au-Pont

Record: 1789202307131401040.dtb
Number: 040
Seismograph: Mini-Seis 1789
Type of Record: Waveform
Date: 13-07-23 14:01:00
Duration: 4,50 Seconds
Sample Rate: 1024
Pre-Trigger: 0,5 Seconds
Seismic Trigger: 0,51 mm/s
Acoustic Trigger: 142,1 dB
Seismic Gain: 63,5
Acoustic Gain: 141,9 dB
Voltage: 6,5

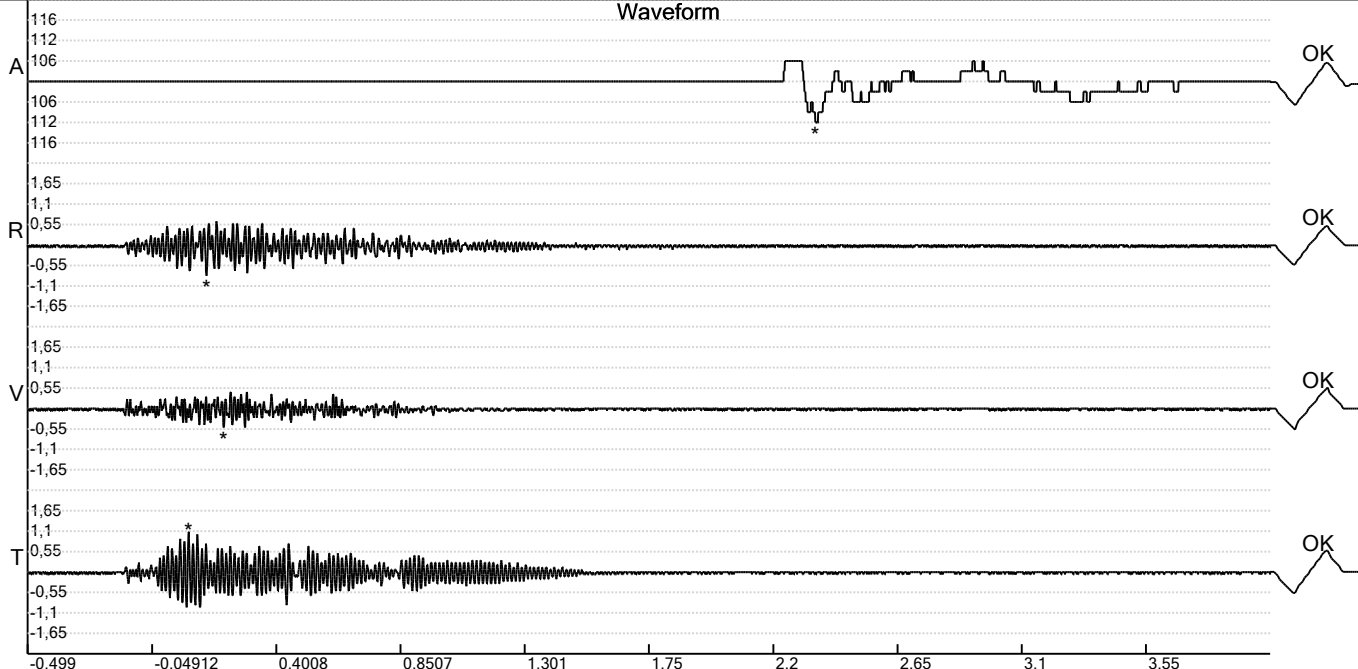
Peaks and Frequencies

PPV Maximum (Geo #1): 1,1 mm/s
Acoustic #1: 112,0 dB @ 5,1 Hz (2,353516 s)
Radial #1: 0,83 mm/s @ 51,2 Hz (0,1494141 s)
Vertical #1: 0,51 mm/s @ 73,1 Hz (0,2109375 s)
Transverse #1: 1,1 mm/s @ 64,0 Hz (0,08398438 s)
Last Calibration Date: 03-12-21

Graph Information

Time Range: -0,499 s to 4 s, Intervals: 0,4499 Seconds

Waveform



Fast Fourier Transform (Amplitude Spectrum)

A - 1,1 (14,6070)

R - 67,5 (211,5963)

V - 67,1 (211,5963)

T - 66,3 (211,5963)

